



AGREGATY FOGO Sp. z o.o.

Święciechowska 36
 64-115 Wilkowice
 Phone. +48 65 534-11-80

Company / customer

Project description FOGO ATS Drawing
 Job number FG ATS 15.01
 Commission EPLAN

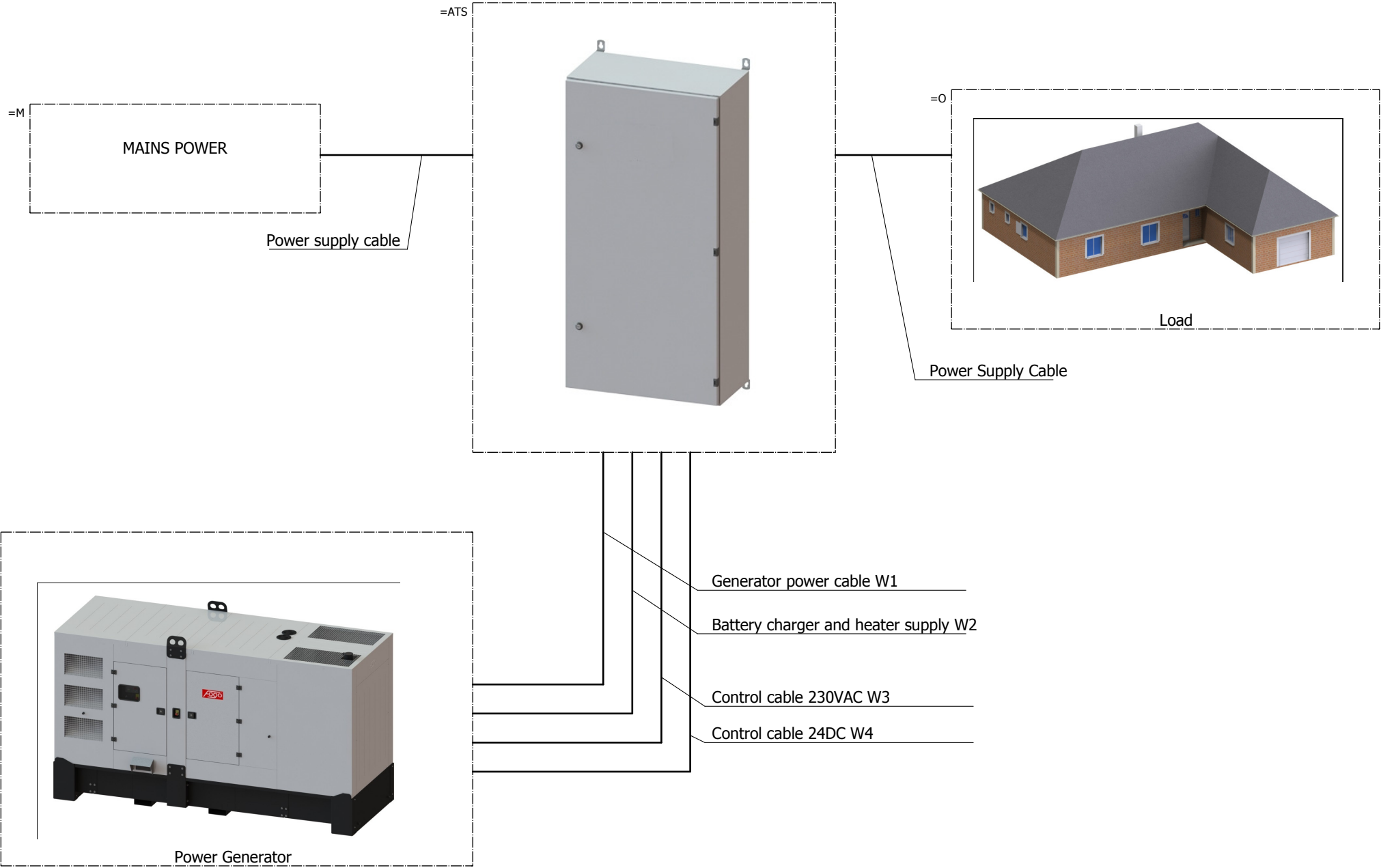
Manufacturer (company) AGREGATY FOGO Sp. z o.o.

Path
 Project name FOGO ATS v02
 Make
 Type
 Place of installation
 Responsible for project
 Part feature

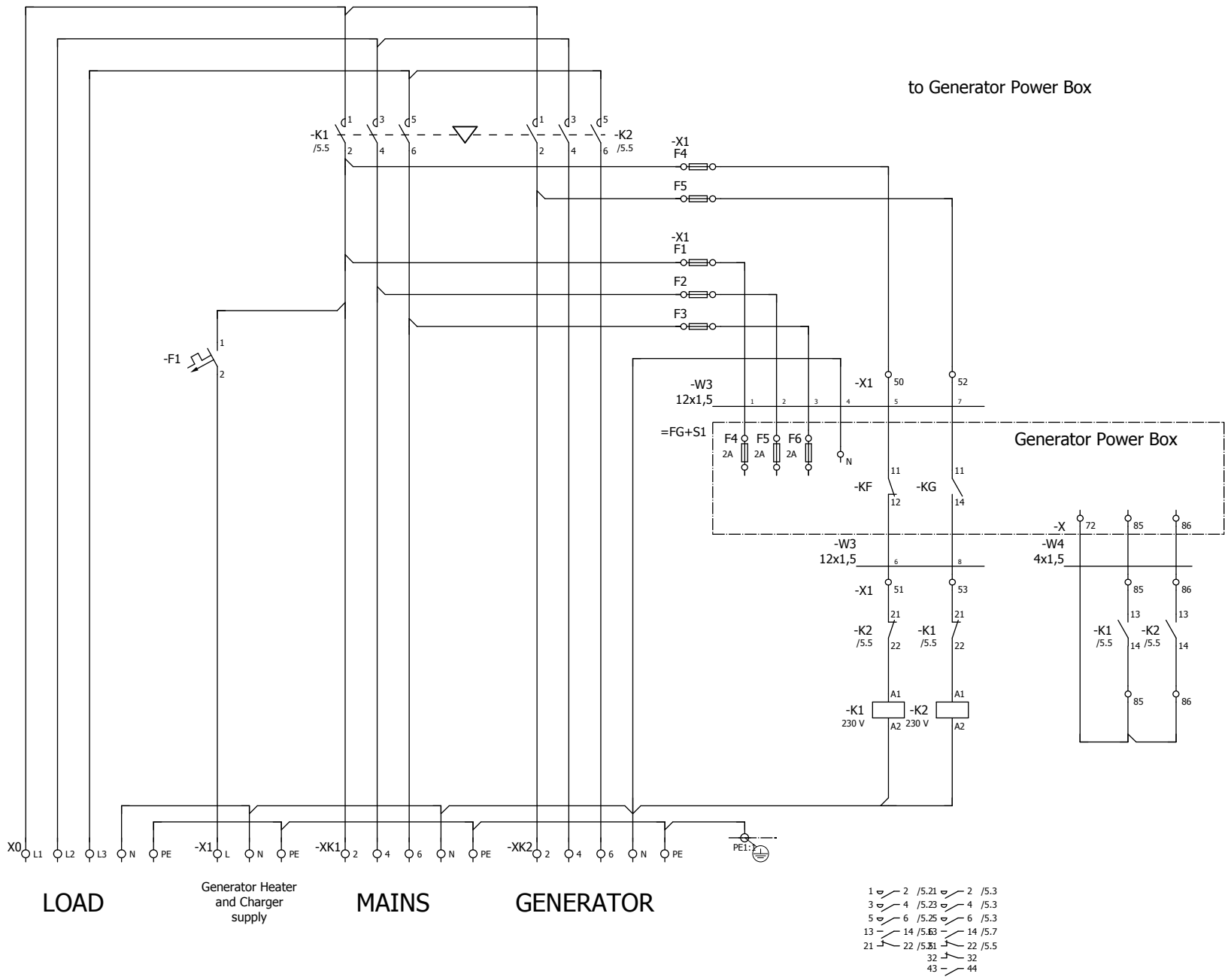
Created on 2015-12-30 by (short name) A.Kardach
 Edit date 2016-06-09 by (short name) A.K.

Number of pages 8

			Date	2015-12-30	FOGO ATS v02	AGREGATY FOGO Sp. z o.o. Święciechowska 36 64-115 Wilkowice		Title page		=		
			Ed.	A.K.							+	
			Appr		FOGO ATS Drawing						Page	1
Modification	Date	Name	Original		FG ATS 15.01						Page	8

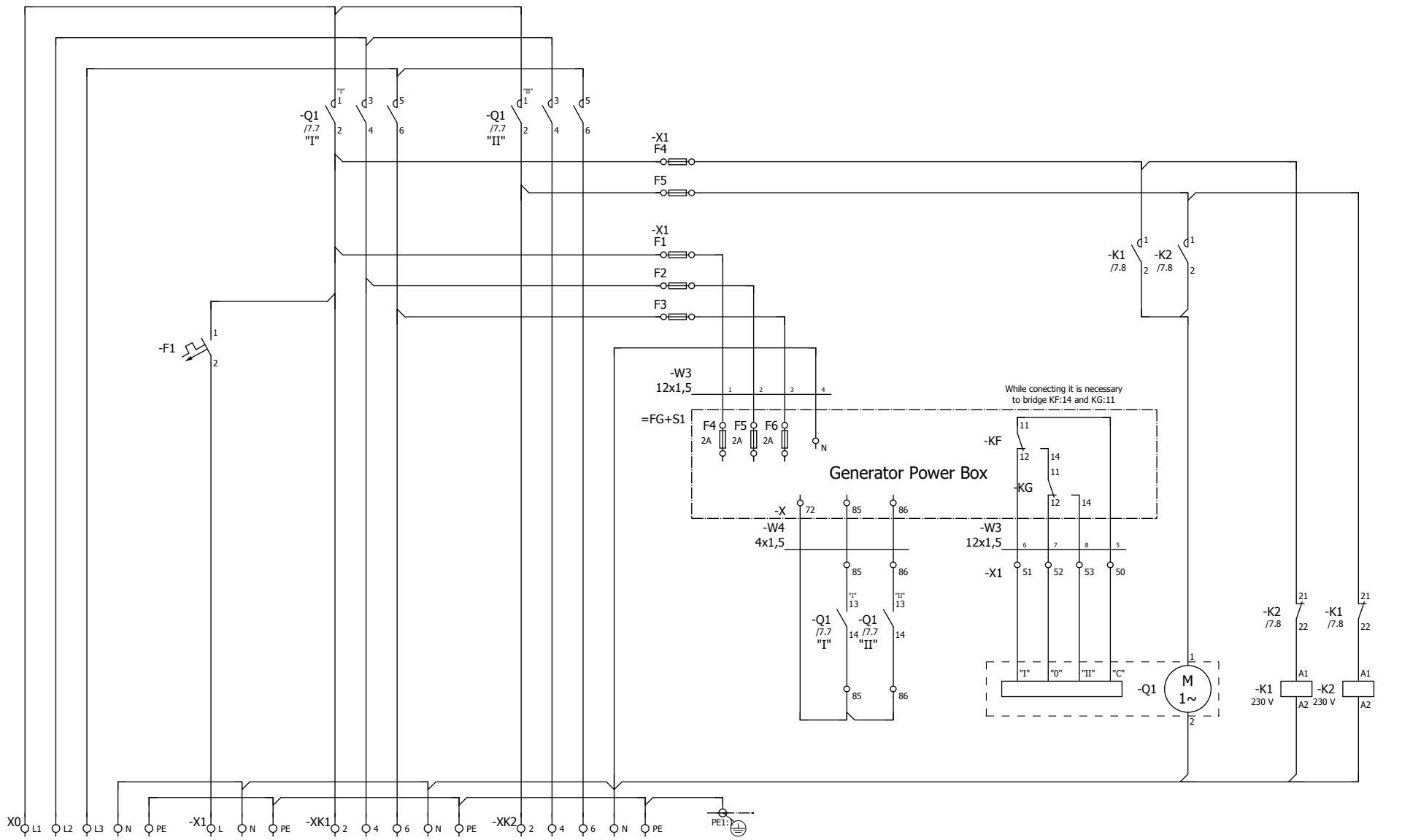


			Date	2015-12-30	FOGO ATS v02	AGREGATY FOGO Sp. z o.o. Święciechowska 36 64-115 Wilkowice		Emergency Power Supply Connection scheme	=	+	Page 3	
			Ed.	A.K.								Page 8
			Appr									
Modification	Date	Name	Original		FOGO ATS 15.01							



= +/-4

			Date	2016-03-22	FOGO ATS v02	AGREGATY FOGO Sp. z o.o. Święciechowska 36 64-115 Wilkowice		Wiring diagram - contactor version		= ATS_S	
			Ed.	A.K.				ATS - contactors		+ S1	
Modification	Date	Name	Original		FG ATS 15.01					Page	8

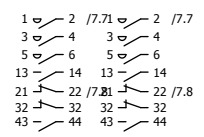


LOAD

Generator Heater
and Charger
supply

MAINS

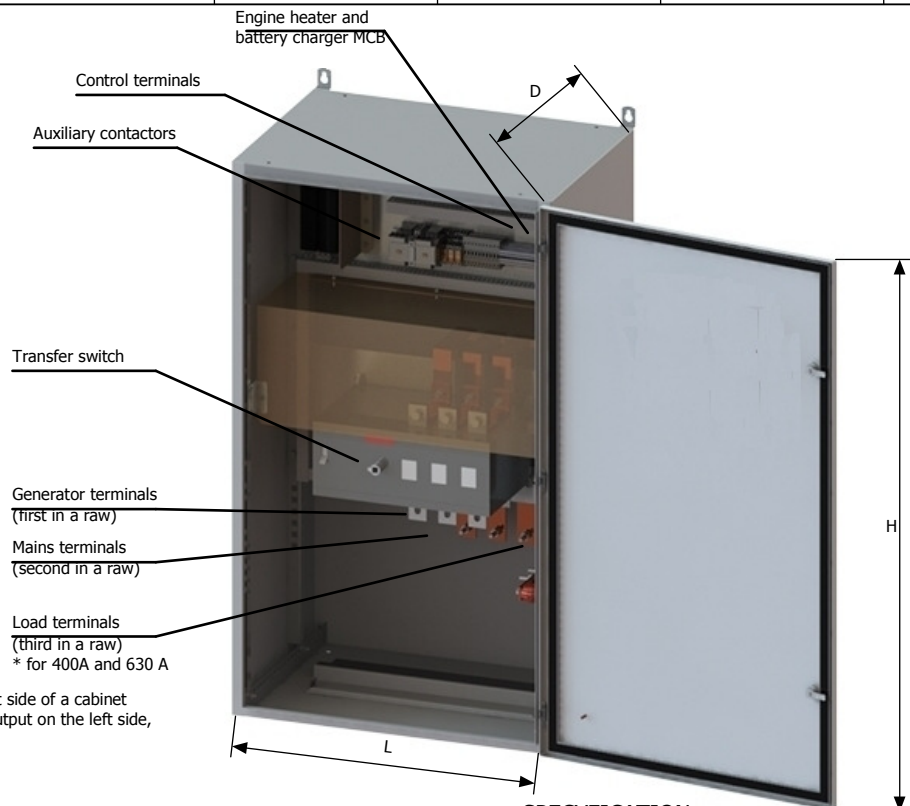
GENERATOR



=ATS_S/6

			Date	2016-03-22	FOGO ATS v02		AGREGATY FOGO Sp. z o.o.		Wiring diagram - transfer switch		= ATS_P	
			Ed.	A.K.	FOGO ATS Drawing		Święciechowska 36		ATS - changeover switch		+ S1	
			Appr		FG ATS 15.01		64-115 Wilkowie				Page 7	
Modification	Date	Name	Original								Page 8	





* for ≤250A, power connection on the left side of a cabinet
for >630A vertical orientation, power output on the left side,
mains and generator on the right side

SPECYFIKATION

ATS type	Gen. power* [kVA]	Nominal current [A]		Switching element		Power cable diameter max [mm]	Enclosure size [mm]			Weight [kg]
		AC-1	AC-3	Manufacturer	Type		L	H	W	
FA100TAB30A0	60	100	65	ABB	OTM100F3CMA230C	35	500	700	250	35
FA125TAB30A0	78	125	78	ABB	OTM125F3CMA230C	70	500	700	250	35
FA160TAB30B0	100	160	125	ABB	OTM160E3CMA230C	70	600	1200	300	55
FA200TAB30B0	120	200	200	ABB	OTM200E3CMA230C	95	600	1200	300	65
FA250TAB30B0	160	250	250	ABB	OTM250E3CMA230C	150	600	1200	300	65
FA400TAB30B0	250	400	400	ABB	OTM400E3CMA230C	150	600	1200	300	70
FA630TAB30C0	400	630	630	ABB	OTM630E3CMA230C	2 x 150	700	1200	500	85
FA800TAB30C0	500	800	800	ABB	OTM800E3CMA230C	2 x 150	700	1200	500	85
FA1000TAB30D0	650	1000	1000	ABB	OTM1000E3CMA230C	2 x 240	900	1800	500	195
FA1250TAB30D0	800	1250	1250	ABB	OTM1250E3CMA230C	2 x 240	900	1800	500	205
FA1600TAB30E0	1000	1600	1250	ABB	OTM1600E3CMA230C	3 x 240	1200	1800	500	280
FA2000TAB30E0	1300	2000		ABB	OTM2000E3CMA230C	4 x 240	1200	1800	500	
FA2500TAB30F0	1600	2500		ABB	OTM2500E3CMA230C	5 x 240	1800	1800	500	

* While selecting ATS for the generator, also MAINS nominal current has to be considered